

Savor

the Differences

The hide-a-bed sofa and glider recliners embrace you as you delight in the optional fireplace or watch your favorite television program on the LCD TV. A full video and audio entertainment package comes standard.

The freestanding dinette table and chairs with in-seat storage provide comfort and functionality as you enjoy meals or chat with friends.



37LSRE shown with Quartz décor and Fall Spice cabinetry.

The hand-crafted, rich wood cabinets and fascias fill the Cypress with warm beauty. Deep, pullout drawers in the fully adjustable sliding pantry hold all your necessary provisions...and even a few extras.

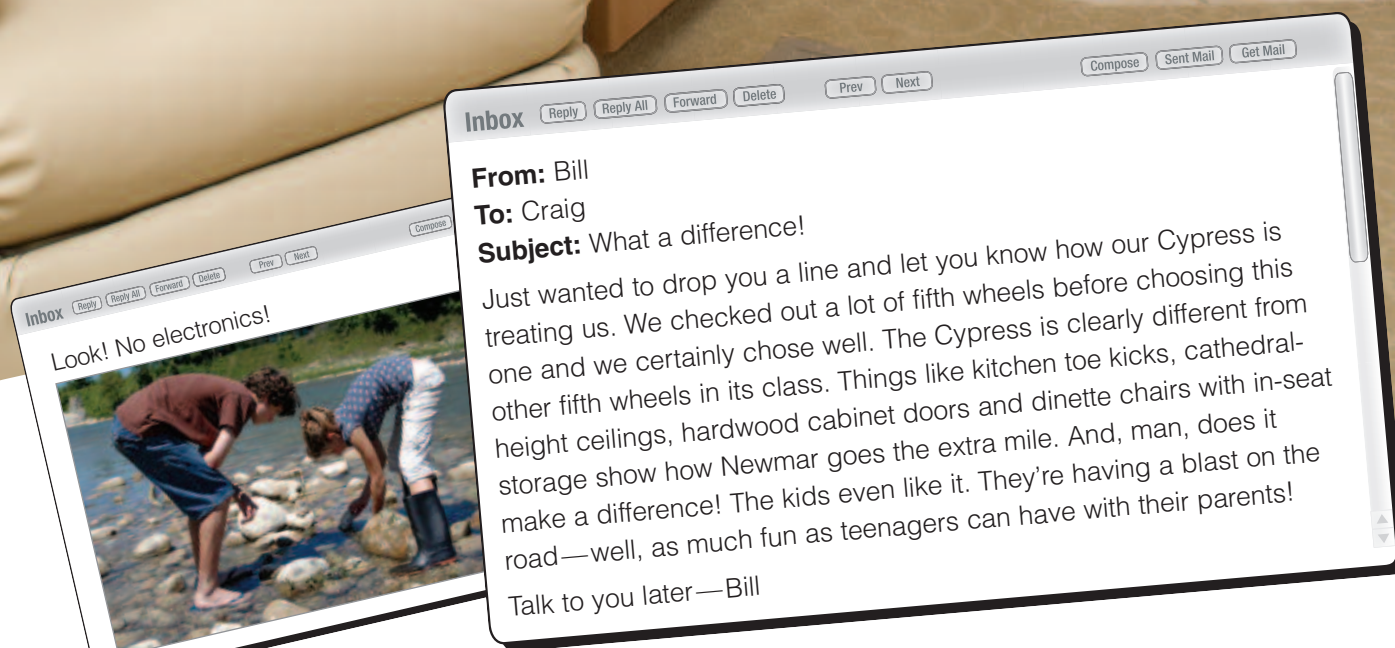
The eight-cubic-foot refrigerator, microwave, 22-inch oven and three-burner cooktop with piezo ignition allow you to cook up any size meal for any size craving.

EMD

Extra Mile Differences

Newmar Builds Walls and Roofs

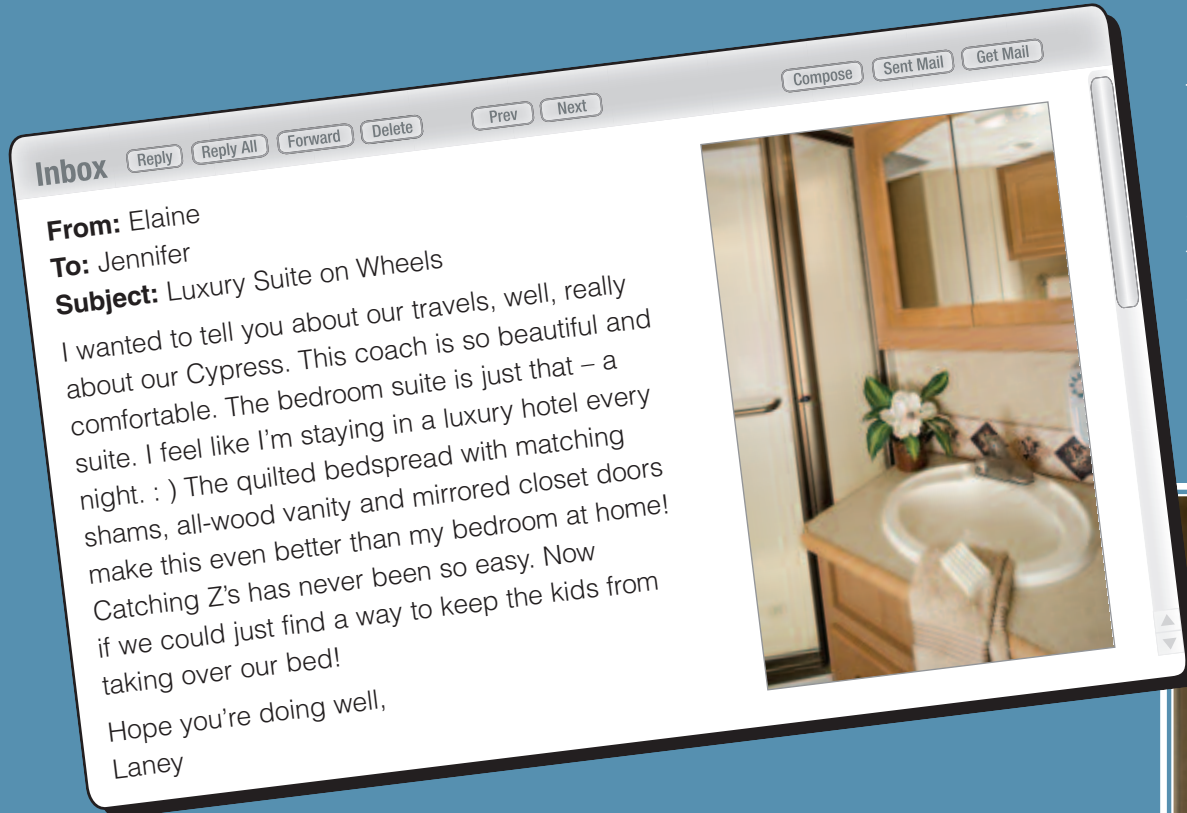
residential-style with studs located 16 inches on-center. Extra C-channel aluminum studs and extra welds may cost more, but they provide a superior wall structure. Stud construction also allows for residential-style wiring and conveniently located switches. Walls and wall studs are then bonded with a technologically advanced adhesive, Sikaflex®, that is durable and flexible to absorb and soften the effects of travel.



32RKSH shown with Quartz décor and Baltic Beech cabinetry.

The Difference is Comfort

32RKSH shown with Quartz décor and Baltic Beech cabinetry. Headboard shown below is part of the Cypress Diamond Package.



The bath area features a one-piece fiberglass shower with molded seat and privacy rain glass, a Create-A-Breeze vent for proper air circulation, and a vanity with a seamless laminate countertop and hardwood edging.

House all your travel needs in the cedar-lined closet, bureau with toe-kick and easily accessible under-bed storage.

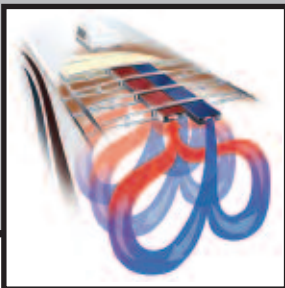


EMD

Extra Mile Differences

The Total Comfort® Dual In-Roof Ducting System was engineered by cooling experts especially for Newmar.

With multiple strategically-placed vents, the system provides true central air conditioning for unparalleled cooling efficiency, balance and whisper-quiet operation.



Newmar does things differently.

Extra Mile Differences are found throughout Newmar RVs – in places you see and in places that are not so obvious. Look for the **EMD** emblem to learn about those features that show how Newmar goes above and beyond to provide a stronger, more durable, superior product.

The warm ambiance invites you to relax among the carefully chosen hardwood fascias, pleated day/night shades and fabric headboard. Before turning in, watch some TV on the optional 19-inch LCD screen.



A Difference in Quality



Your Cypress fifth wheel reflects Newmar's long history of product innovation and industry "firsts." You can depend on the exacting standards and meticulous care by which this fifth wheel is built. It's a showcase for Newmar value.

- A. Aerodynamic Gelcoated Fiberglass End Caps
- B. Gelcoated Exterior Sidewall
- C. Dark Tinted Safety Glass
- D. Dual Battery Box
- E. Molded Lower Sidewall Skirting and Gooseneck
- F. Power Front Jacks with Manual Override
- G. Pass-Through SuperStorage™
- H. 12" I-Beam Custom-Built Frame
- I. Full-Height Frame Outriggers
- J. EZ Lube® Hubs
- K. MOR/ryde® LRE Suspension
- L. Radius Aluminum Roof Wraps
- M. 15,000 BTU Total Comfort™ Ducted Air Conditioning
- N. 16" O.C. Aluminum Sidewall Studding
- O. BriteTEK™ Roof
- P. Walkable Roof Decking
- Q. 16" O.C. Aluminum Roof Rafters
- R. Side Awning



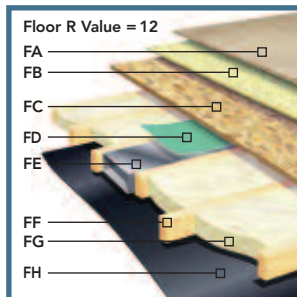
Newmar Express Limited Warranty

As proof of our commitment to you, we at Newmar back every Cypress fifth wheel with our industry-leading, one-year Newmar Express Limited Warranty. Ask your dealer for details.

The Limited Five-Year Structural Warranty

If any part of your Newmar recreational vehicle superstructure (which is the steel/aluminum structure of the sidewall, roof or frame) fails to perform properly within five years, from the date of purchase, due to faulty workmanship or material supplied by Newmar, it will be repaired without charge for either parts or labor by Newmar. This structural warranty is available only to the original purchaser and is non-transferable.

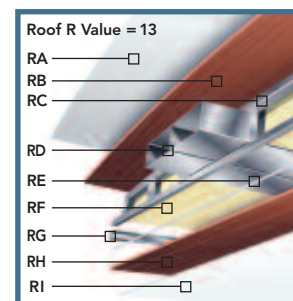
The Cypress front cap has been redesigned to provide easy towing with short-bed trucks as well as standard-bed trucks, allowing for a 60-degree turning angle while maintaining its pleasantly streamlined look.



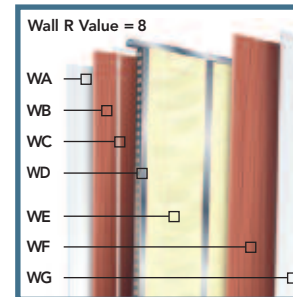
- FA. Carpet/Vinyl Floor
- FB. Residential-Grade Carpet Padding
- FC. 5/8" Floor Decking
- FD. Foam Panel for Added Insulation and Noise Reduction
- FE. Aluminum Heat Ducting

- FF. 2" x 3" Wood Floor Joists
- FG. R-7 Fiberglass Batten Insulation

- FH. Continuous Corrugated Plastic Underbelly



- RA. Strong, Durable BriteTEK™ Roof
- RB. Walkable Roof Decking
- RC. Aluminum Rafter Framing
- RD. Central Air Conditioning Ducting
- RE. Sikaflex® Adhesive
- RF. R-11 Fiberglass Batten Insulation
- RG. Aluminum Stringer Framing
- RH. 3/16" Plywood Ceiling Panel
- RI. Vinyl Overlay



- WA. Gelcoated Fiberglass Exterior Sidewall
- WB. 3/16" Plywood Exterior Wall
- WC. Sikaflex® Adhesive
- WD. Aluminum Framing with C-Channels
- WE. R-7 Fiberglass Batten Insulation
- WF. 3/16" Plywood Interior Wall
- WG. Vinyl Overlay

1. Expansive Pass-Through SuperStorage™ Area is heated and lighted. It boasts a handy cargo hook, three-way access and optional pullout storage tray. It also provides access to the separate utility compartment and houses the water pump for sound isolation.

2. Manually-Operated Sliding Porch with triple step and handrail is available as an option. It provides a wider platform for safety and stability entering and exiting the coach.

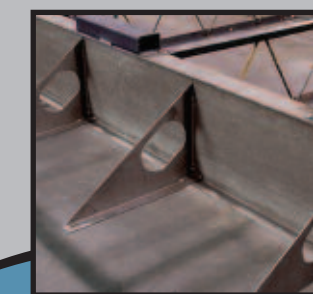
3. Optional MOR/ryde® Pin Box absorbs jolts between the fifth wheel and the truck, and acts as a cushion to significantly reduce the effect of chucking and road shock, providing a smooth and comfortable towable experience.

4. The Optional Carefree® 12-Volt Travel'r Power Side Awning extends or retracts effortlessly in less than 20 seconds with the simple touch of a button!

EMD

Extra Mile Differences

An Incomparable Superstructure, the Cypress Chassis is designed and built by Newmar with stronger steel, extra reinforcements and additional welds to make it exceptionally robust. The huge 12-inch steel I-beams provide superior Moment of Inertia (stiffness) and Section Modulus (bending stress) over smaller, thinner I-beams and stacked tube steel.



Engineers take advantage of the entire height of the I-beam to attach full 12-inch steel outriggers for extended stability and strength. Many other outriggers are partial height. Newmar believes that a home on wheels should start with a solid and stable foundation.

Exterior Color Options

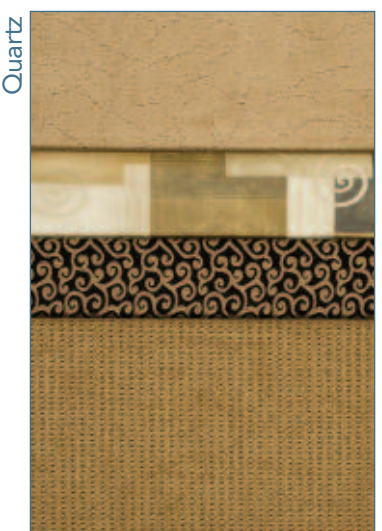
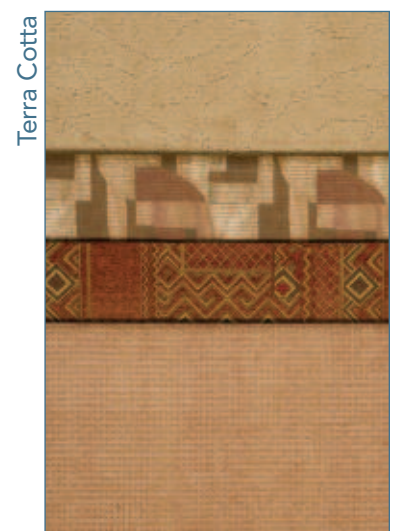
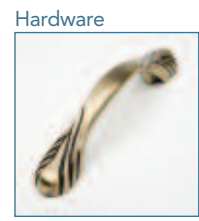
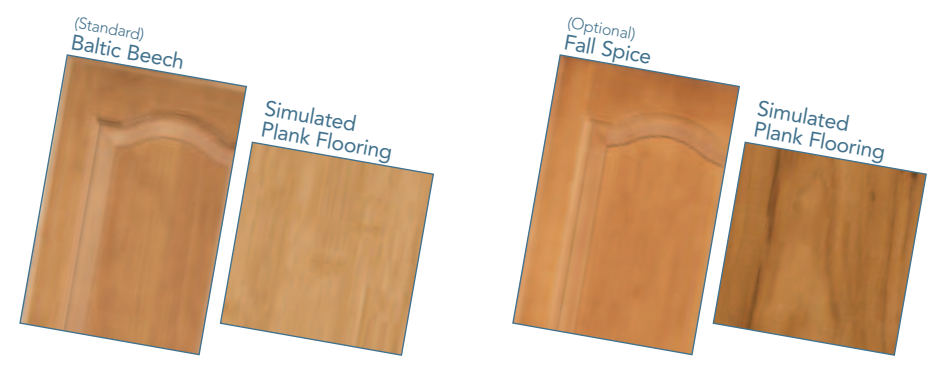


The Cypress Diamond Package Includes:



- Padded Vinyl Ceiling
- Decorative Wardrobe Header
- Second Sink Cover
- Pillow-Top Mattress
- Halogen Ceiling Lights
- Upgraded Slideout Fascias
- Deluxe Living Room Mirror
- Rear Ladder
- Upgraded Headboard with Bedpost Accents
- Raised-Panel Interior Passage Door
- Tripod Satellite Prep
- PolarPak R-19™ Insulation (roof, floor, front and rear end caps)
- Exterior Vinyl Graphics with Painted Skirt

Interior Color Options

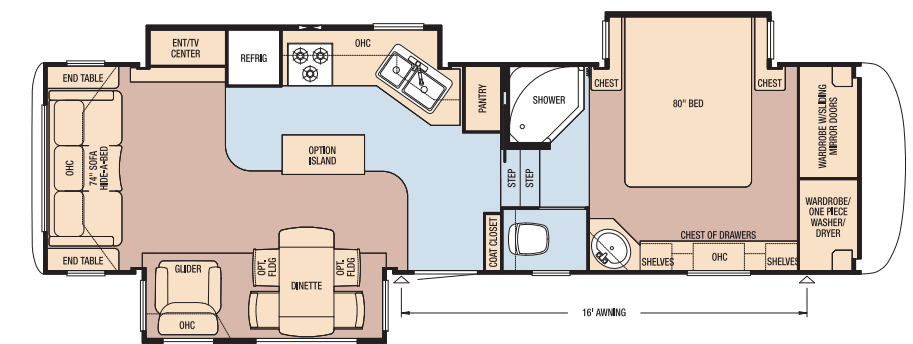


- Vinyl Floor
- Carpet

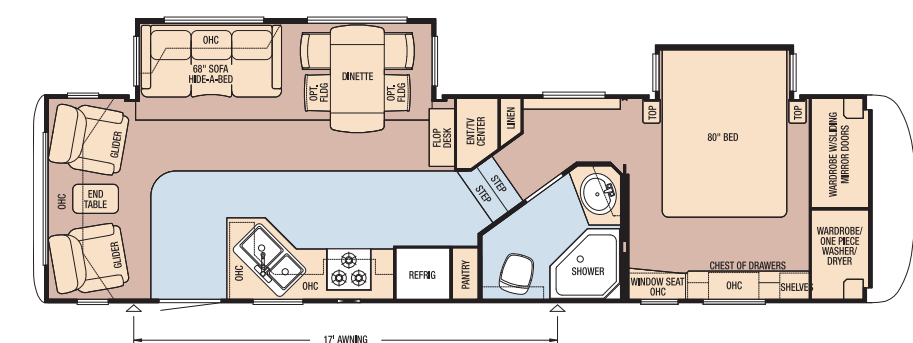


The Newmar-Originated Slideout, with its 2x4 steel rails and massive reinforcement, is the strongest, most reliable and most durable on the market. A superior-strength platform results from welding hefty guide rail tubes to both mainframe rails and welding extra reinforcement into the system. Closed-channel frames keep small animals and outside debris from entering the coach.

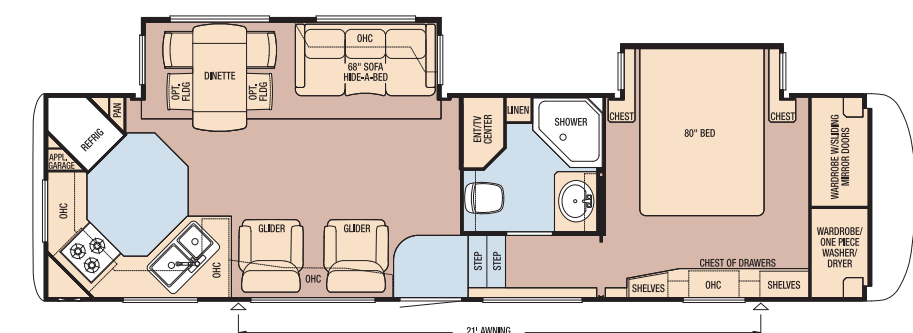
Model	CPFW 31RLKS
Tire Size	235/85R16-G
GAWR	7,000
GVWR	15,500
App. Length	34' 8"
App. Height	12' 11"
Width	101"
App. Dry Weight	12,245
App. Hitch Weight	2,325
Fresh Water (gal.)	75
Grey (gal.)	84
Sewage Cap. (gal.)	42
App. Hitch Height	47"
Heat Cap. (BTU)	35,000



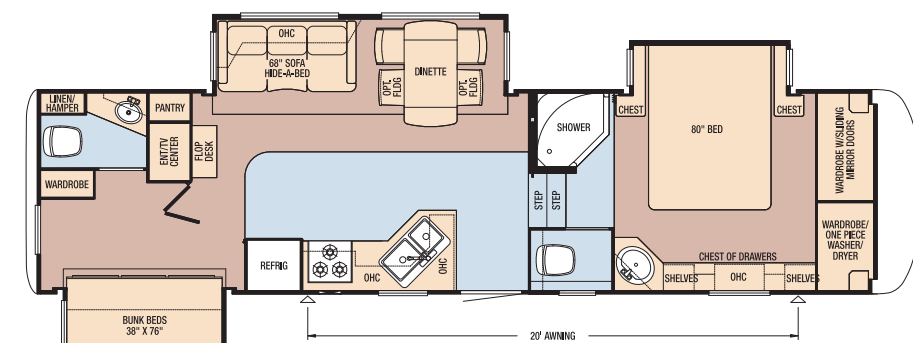
Model	CPFW 32CKAH
Tire Size	235/85R16-G
GAWR	7,000
GVWR	15,500
App. Length	35' 7"
App. Height	12' 11"
Width	101"
App. Dry Weight	11,650
App. Hitch Weight	2,215
Fresh Water (gal.)	75
Grey (gal.)	84
Sewage Cap. (gal.)	42
App. Hitch Height	47"
Heat Cap. (BTU)	35,000



Model	CPFW 32RKSH
Tire Size	235/85R16-G
GAWR	7,000
GVWR	15,500
App. Length	35' 8"
App. Height	12' 11"
Width	101"
App. Dry Weight	12,080
App. Hitch Weight	2,295
Fresh Water (gal.)	75
Grey (gal.)	84
Sewage Cap. (gal.)	42
App. Hitch Height	47"
Heat Cap. (BTU)	35,000



Model	CPFW 33RBHB
Tire Size	235/85R16-G
GAWR	7,000
GVWR	16,100
App. Length	36' 8"
App. Height	12' 11"
Width	101"
App. Dry Weight	13,000
App. Hitch Weight	2,470
Fresh Water (gal.)	75
Grey (gal.)	84
Sewage Cap. (gal.)	84
App. Hitch Height	47"
Heat Cap. (BTU)	35,000



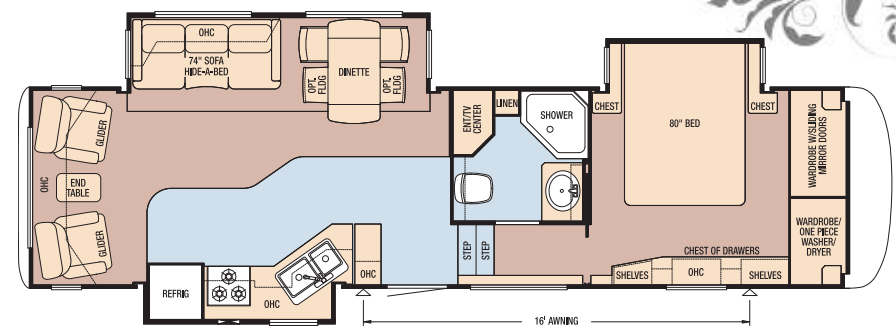
Distinctive Differences

E.M.D.
Extra Mile Differences

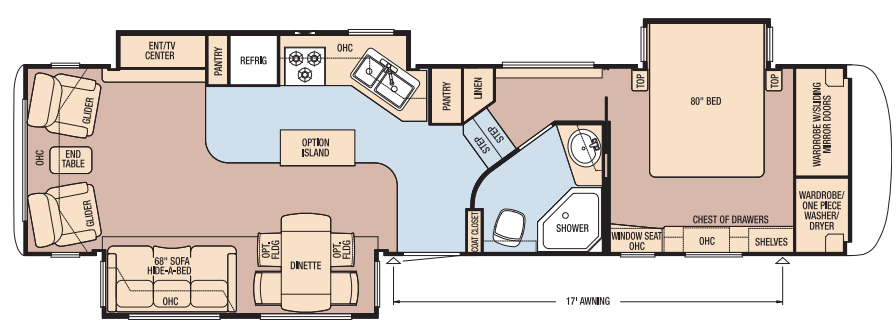


Newmar Pioneered and has a Patent on the Flat-Floor Slideout. Sliding a room in and out poses some out-of-the-way engineering and sealing challenges to do it right. Newmar developed an improved slideout wedge roof design that forms a tighter closure when the roof is extended. A specially developed double-bulb, superior-memory seal provides protection from outside elements and insects, and sweeps off debris on room retraction.

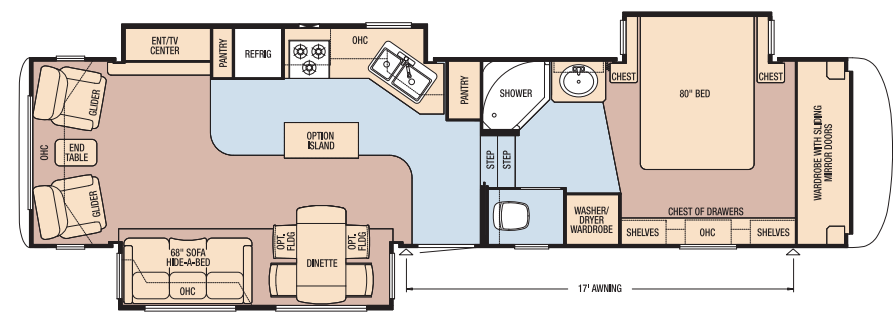
Model	CPFW 33RLSH
Tire Size	235/85R16-G
GAWR	7,000
GVWR	16,100
App. Length	36' 4"
App. Height	12' 11"
Width	101"
App. Dry Weight	12,650
App. Hitch Weight	2,405
Fresh Water (gal.)	75
Grey (gal.)	84
Sewage Cap. (gal.)	42
App. Hitch Height	47"
Heat Cap. (BTU)	35,000



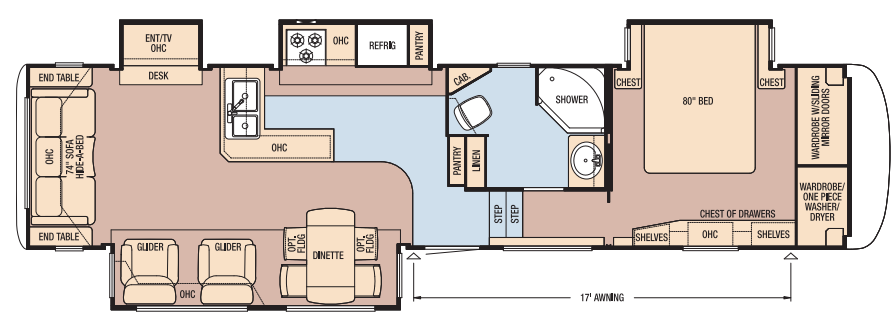
Model	CPFW 35KSAH
Tire Size	235/85R16-G
GAWR	7,000
GVWR	16,100
App. Length	38' 6"
App. Height	12' 11"
Width	101"
App. Dry Weight	12,875
App. Hitch Weight	2,445
Fresh Water (gal.)	75
Grey (gal.)	84
Sewage Cap. (gal.)	42
App. Hitch Height	47"
Heat Cap. (BTU)	35,000



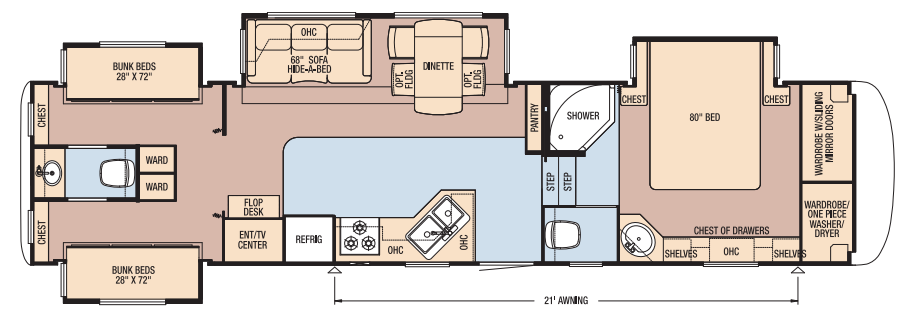
Model	CPFW 35KSRL
Tire Size	235/85R16-G
GAWR	7,000
GVWR	16,600
App. Length	38' 6"
App. Height	12' 11"
Width	101"
App. Dry Weight	13,300
App. Hitch Weight	2,525
Fresh Water (gal.)	75
Grey (gal.)	84
Sewage Cap. (gal.)	42
App. Hitch Height	47"
Heat Cap. (BTU)	35,000



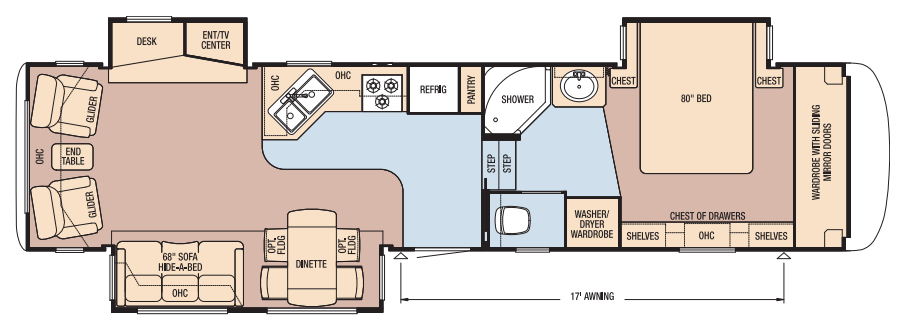
Model	CPFW 36LKH
Tire Size	215/75R17.5-H
GAWR	8,000
GVWR	17,500
App. Length	39' 7"
App. Height	12' 11"
Width	101"
App. Dry Weight	14,020
App. Hitch Weight	2,665
Fresh Water (gal.)	75
Grey (gal.)	84
Sewage Cap. (gal.)	42
App. Hitch Height	47"
Heat Cap. (BTU)	35,000



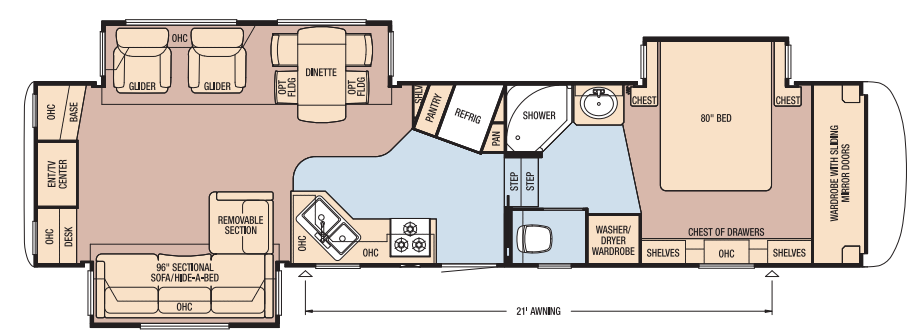
Model	CPFW 36RBD5
Tire Size	215/75R17.5-H
GAWR	8,000
GVWR	17,500
App. Length	39' 9"
App. Height	12' 11"
Width	101"
App. Dry Weight	14,335
App. Hitch Weight	2,725
Fresh Water (gal.)	75
Grey (gal.)	84
Sewage Cap. (gal.)	84
App. Hitch Height	47"
Heat Cap. (BTU)	35,000



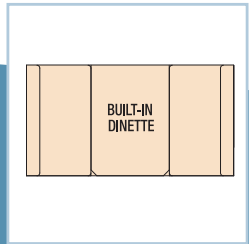
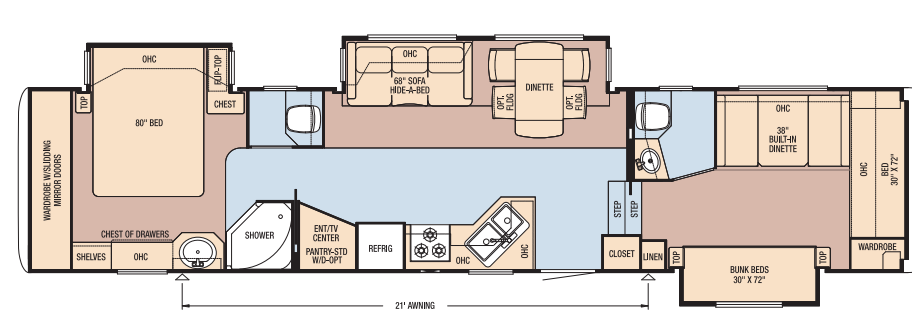
Model	CPFW 36RLSK
Tire Size	235/85R16-G
GAWR	7,000
GVWR	16,100
App. Length	38' 11"
App. Height	12' 11"
Width	101"
App. Dry Weight	12,820
App. Hitch Weight	2,435
Fresh Water (gal.)	75
Grey (gal.)	84
Sewage Cap. (gal.)	42
App. Hitch Height	47"
Heat Cap. (BTU)	35,000



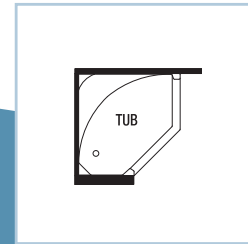
Model	CPFW 37LSRE
Tire Size	235/85R16-G
GAWR	7,000
GVWR	16,600
App. Length	39' 11"
App. Height	12' 11"
Width	101"
App. Dry Weight	13,520
App. Hitch Weight	2,570
Fresh Water (gal.)	75
Grey (gal.)	84
Sewage Cap. (gal.)	42
App. Hitch Height	47"
Heat Cap. (BTU)	35,000



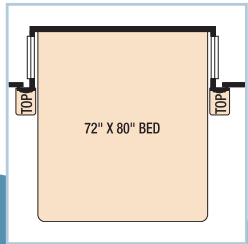
Model	CPFW 39CKDB
Tire Size	215/75R17.5-H
GAWR	8,000
GVWR	17,500
App. Length	42' 0"
App. Height	12' 11"
Width	101"
App. Dry Weight	13,985
App. Hitch Weight	2,660
Fresh Water (gal.)	75
Grey (gal.)	84
Sewage Cap. (gal.)	84
App. Hitch Height	47"
Heat Cap. (BTU)	35,000



Built-In Booth Dinette with (2) Drawers option available on all models.



Fiberglass Tub with Glass Door option available on most, not all, models.



King-Size Bed available on all models except 32CKAH, 35KSAH & 39CKDB.